

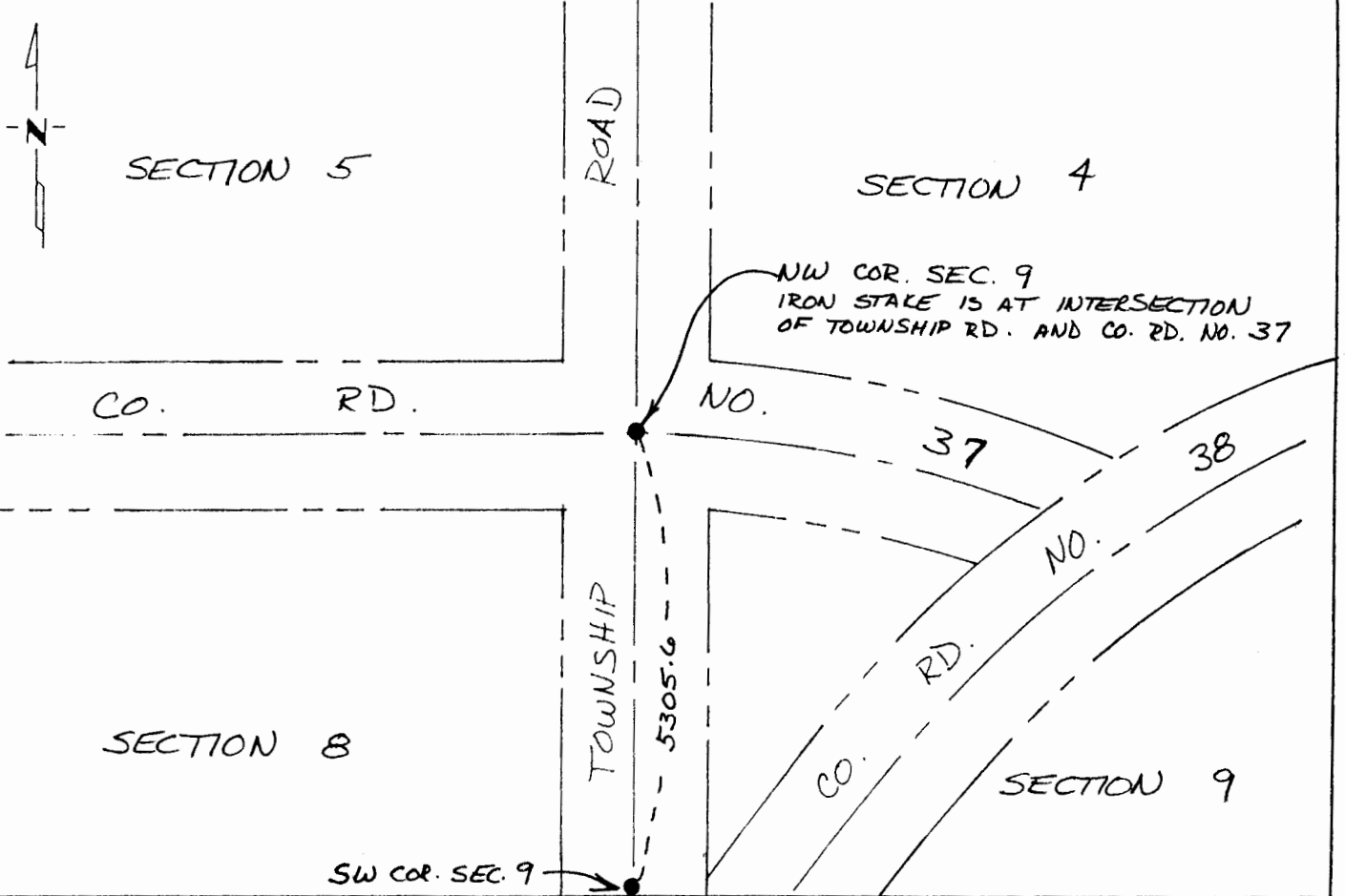
CERTIFICATE OF LOCATION OF GOVERNMENT CORNER

NORTHWEST Corner of Section 9, Township 107N, Range 40W, 5 P.M.
STATE OF MINNESOTA, County of MURRAY

At the corner location shown on the sketch:

- On 9/27/88 found a 3/4" IRON STAKE IN PLACE 3" BELOW SURFACE
DATE
- left monument as found, lowered monument, removed monument (explain)
- On _____ placed a _____
DATE

SKETCH OF REFERENCE TIES



Statement of evidence relative to this corner location is on back of page.

I hereby certify that this document and the data contained herein was prepared by me or under my direct supervision

C. Allen [Signature] 10-30-90
SIGNATURE DATE

- Registration No. 6400
- Land Surveyor, Professional Engineer
 - County Surveyor, County Engineer

OFFICE OF THE REGISTER OF DEEDS
County of _____

I hereby certify that this document was filed in the Reg. of Deeds office at _____ .M. on the _____ day of NOV 6 1980 A.D., 19 _____

County Recorder _____
By J. Anne V. Johnson, Deputy
DOCUMENT NO. _____

SIXTY ENGINEERING, INCORPORATED WENON, MINNESOTA SURVEY NO. MUB80/S

Statement of Evidence:

COUNTY ENGINEER RECORDS SHOW 9" X 14" X 20" STONE WITH
3/4" IRON PIN OVER STONE.